

Angular Contact Ball Bearings

Bearing No. : **NACHI 7226C**

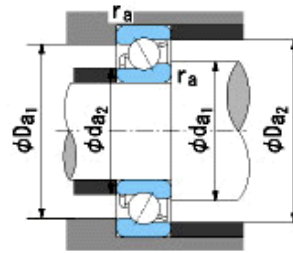
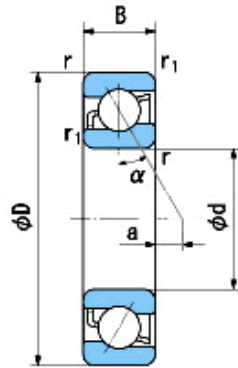
■ Bearing Type

■ Clearance

■ Tolerance Class

Dimensions

d = 130⁰_{-0.025}
 D = 230⁰_{-0.030}
 B = 40⁰_{-0.250}
 r = 3~5
 (Radial Direction)
 r = 3~8
 (Axial Direction)
 r1 = 1.1~2.5
 (Radial Direction)
 r1 = 1.1~4
 (Axial Direction)
 a = 0.9



Dimensions

da1(min) = 144
 da2(min) = 144
 Da1(max) = 216
 Da2(max) = 223
 ra(max) = 2.5
 ra1(max) = 1
 Mass = 6.88 kg

Basic Dynamic Load Rating Cr : **214,000** N

Basic Static Load Rating Cor : **216,000** N

Limiting Speed ;

Grease Lubrication : **4,400** min⁻¹

Oil Lubrication : **6,100** min⁻¹

O.D.Surface Runout with Side :

Axial Runout with Bore :

Axial Runout with Raceway :

Width Variation :

Radial Runout :

INNER RING

OUTER RING

-

-

-

0.030

0.030

-

-

-

0.030

0.050